

PVC Manhole Invert-to-Rim Rehab System

Installation Guide



Features & Benefits

- ASTM C478 Lid (H20 load rated)
- AWWA C900 Riser
- ASTM C990 Joint Sealant
- Corrosion-resistant Base to Lid and Riser
- Restore Structural Integrity with Structural Riser Insert
- Field Adjustment of Height with Grade Rings
- Quick Install
- 50-year Warranty
- Riser Factory Cut to Length (optional)
- Factory Installed Ladder (optional)

Installation



Excavate and remove existing flat top or cone top



Excavate and remove existing flat top or cone top



Excavate and remove existing flat top or cone top



Clean all MH walls. Substantially remove incontinent concrete material



Partially remove bench and channel material (min 2”); clean and remove excess material



All components labeled



Lower base liner insert into manhole



Secure liner in place



Pipe penetration to be sealed with inflatable plugs



Pour high-flow, non-shrink grout behind liner



After grout has hardened, place butyl rubber sealant around joint



Lower PVC riser into manhole



Ensure riser is sealed on FRP base liner joint, ensuring mastic sealant is fully engaged



Ensure riser is plumb



Place butyl rubber sealant on top end of riser



Lower FRP-lined precast lid onto riser



Backfill



Insert Telescopic Access Collar (TAC) gasket



Stack grade rings



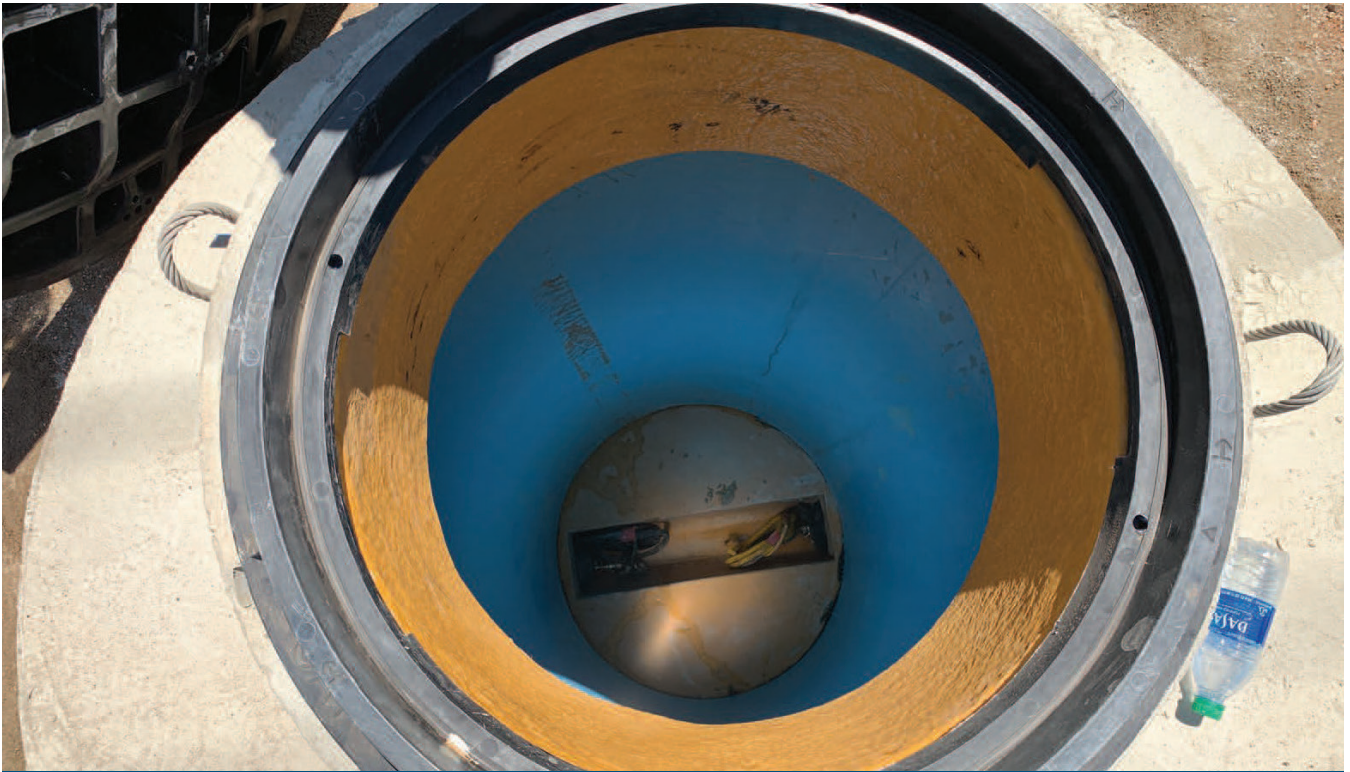
Insert Telescopic Access Collar tube



Place butyl rubber sealant on top of flange TAC



Set manhole cover frame



Completed installation (open)



Completed installation (covered)